

Notes for Figure 6P-30—Typical Application 30 Interior Lane Closure on a Multi-Lane Street

Guidance:

1. *This information applies to low-speed, low-volume urban streets. Where speed or volume is higher, additional signing such as LEFT LANE CLOSED XX FT should be used between the signs shown.*

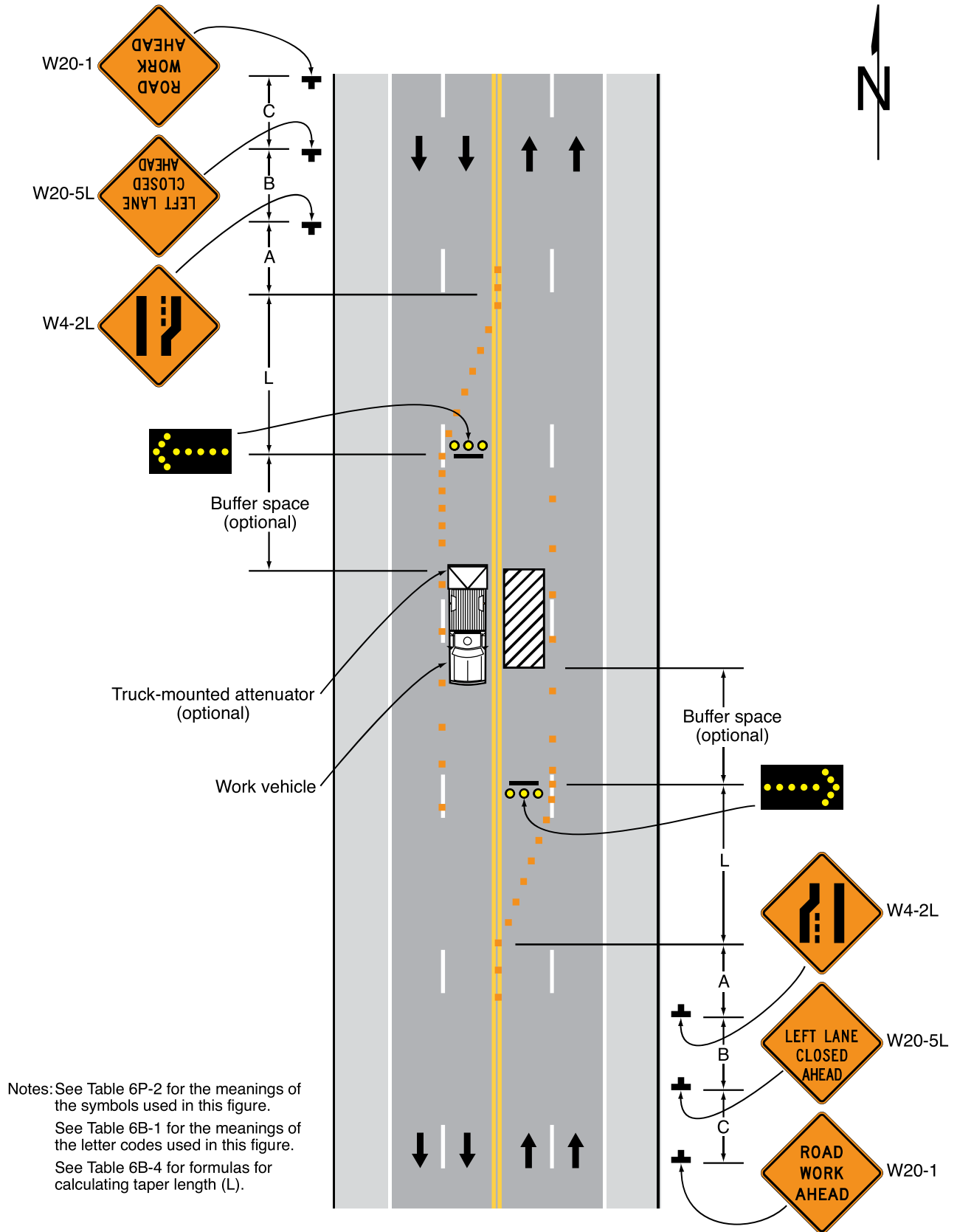
Option:

2. Positive protection devices may be used per Section 6M.02.
3. Shadow vehicles with a truck-mounted attenuator may be used.

Support:

4. The closure of the adjacent interior lane in the opposing direction might not be necessary, depending upon the activity being performed and the work space needed for the operation.

Figure 6P-30. Interior Lane Closure on a Multi-Lane Street (TA-30)



Notes: See Table 6P-2 for the meanings of the symbols used in this figure.
 See Table 6B-1 for the meanings of the letter codes used in this figure.
 See Table 6B-4 for formulas for calculating taper length (L).

Typical Application 30